



# Greener Shipping Summit 2025

## Real-Time Performance Compliance Monitoring Solutions



Antonis Tsouras  
Bernhard Schulte Shipmanagement (HELLAS)

Ship Owning, Ship Management, Digital Solutions and other Maritime Services

SCHULTE GROUP 

## Ship Owning

BERNHARD  
SCHULTE 



**75+** Owned  
Vessels

## Ship Management

   
 CRUISE  
SERVICES



**670+** Managed  
Vessels

## Maritime Services

### Digital Solutions



**4,500+** Vessels with  
MariApps  
Software

### Other Maritime Services

 SCHULTE  
MARINE CONCEPT  
 CATERING  
SERVICES 



**15+** Specialised Maritime  
Companies



# Evolving Operational and Regulatory Complexity

---



Expanding regulatory and operational demands

Increasing data reporting to owners, charterers, and regulators

Real-time data visibility is becoming a compliance requirement



# Increasing Need for Data Transparency

---



Fragmented reporting systems cause data inconsistency.

Quality, traceability, and standardization are critical.

How can we ensure consistent, high-quality data across a global fleet?



# Building a Unified Compliance Framework



---

Ensuring Consistency and Reliability across global fleet operations.

Digital Tools supporting compliance monitoring:

- Electronic Record books (eRBooks) and e-Logs
- Voyage planning tool
- Engine Fault Diagnostics tool
- Online defect reporting system
- Business Intelligence (BI) Dashboards



# The role of Digitalization in Ship Management

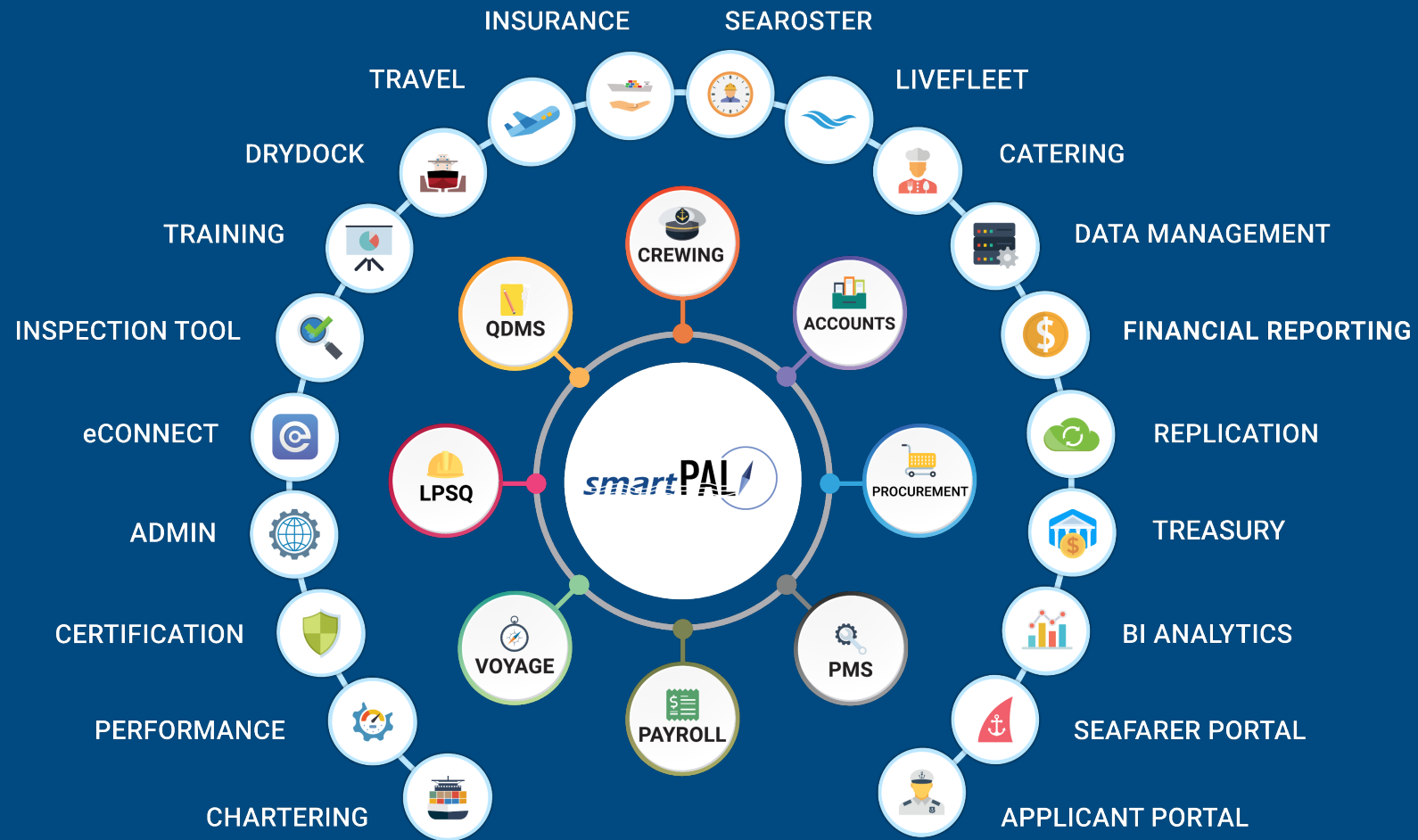


## From Fragmented Data to Unified Insight

- Centralized performance dashboard
- Integration of diverse onboard and shore data sources
- Unified visibility driving proactive decisions



# Integrated Digital Ecosystems



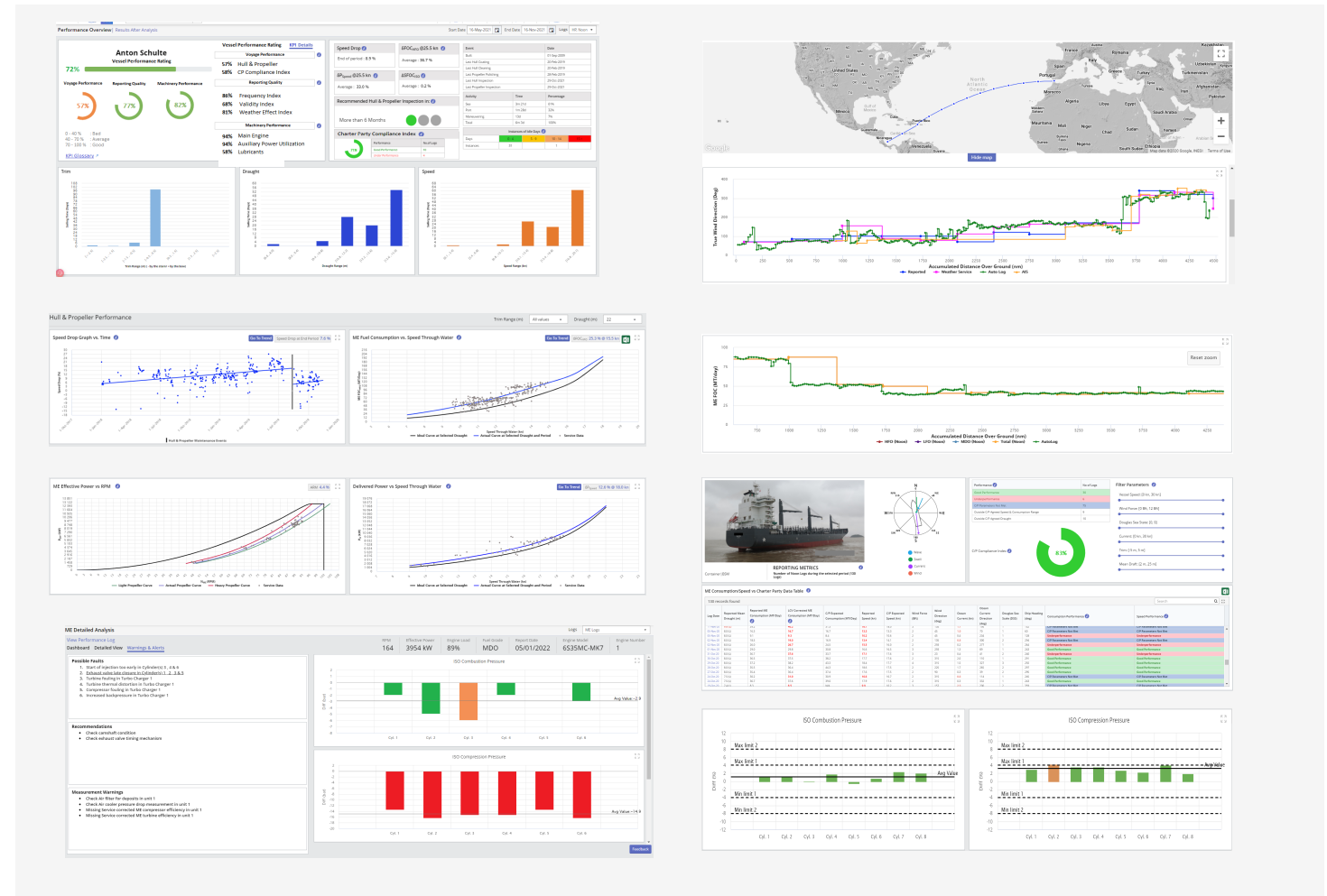


# Actionable Insights through Performance dashboards

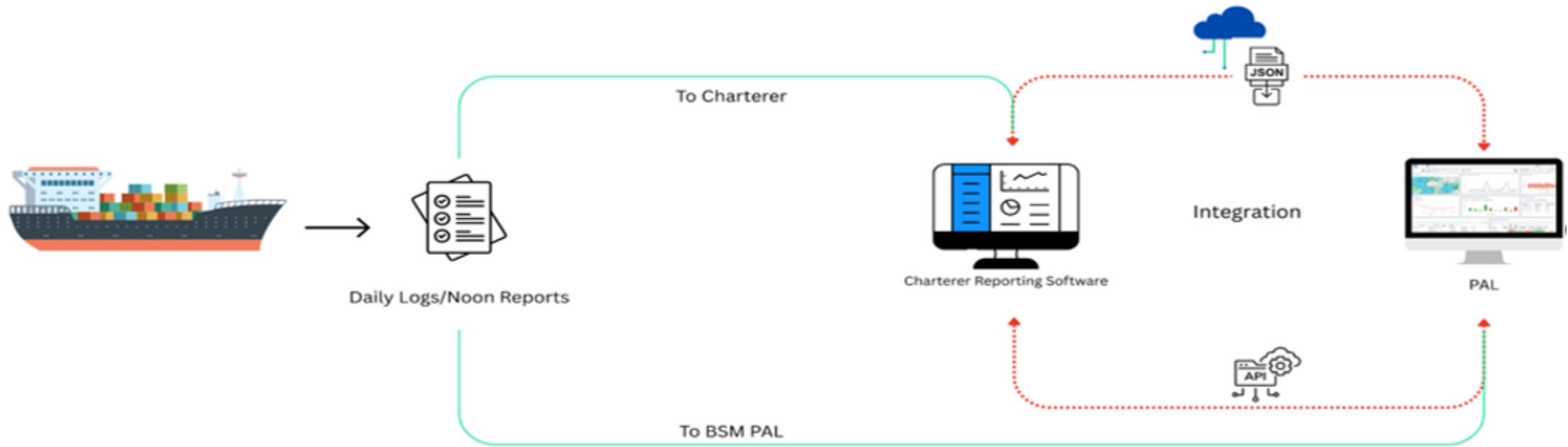


- Voyage Optimisation & Charterparty Monitoring
- Hull & Propeller Performance
- Main Engine Performance
- Auxiliary Engine and Boilers Utilisation
- Fleet Benchmarking
- CII Overview /EU ETS & FuelEU Dashboard

AI, Machine Learning and IoT technologies are developed for fleet performance monitoring, maintenance, procurement, crewing and data management



# Automated Charterers Report



## Objective:

Eliminate multiple reporting of noon reports

## Solution:

Report data in one platform, automatically fetched to the other.

## Integration Method:

Utilization of API for seamless data transfer

# From Reactive Reporting to Proactive Maintenance



## Building a One-Stop Troubleshooting Resource

**BOM** PAL/4 [Grid Icon] [Gear Icon] [Lightbulb Icon] [Gear Icon]

Defect Report Across the Vessels

Company: Select All | Principal: All Owners | Vessel: All Vessels | IMO Search: Enter IMO Number | Search: Enter Equipment Code or Name | Job Status: Pending

Defect Priority: Select All | Equipment Priority: Select All | Discipline: Select All | Equipment Type: Select All | From Date: 04-May-2025 | To Date: 04-Nov-2025

2 records found

	Principal	IMO Number	Vessel Name	Job Order No.	Equipment Code	Equipment Name	Job Title	Issue Date	Job Status	Defect Raised By	Defect Priority
...				<a href="#">V-SSA003987/25</a>	651	AUXILIARY ENGINE	Aux engines LO pressure an...	29-Jun-2025		Chief Engineer	4-Low

Trend analysis identifies recurring issues and root causes



Prevent reoccurrences  
Enables proactive maintenance and continuous improvement

# Importance of Performance Monitoring in Shipping



Enhancing operational  
efficiency and safety



Ensuring regulatory  
compliance (CII, EU ETS,  
FuelEU)



Reducing environmental  
impact

# Shaping the Future of Ship Management



Real-time data transforms compliance into a competitive advantage

Integrated solutions can drive safety, efficiency, and sustainability





# Thank you!

Antonis Tsouras  
Fleet Manager  
Bernhard Schulte Shipmanagement (HELLAS)

Member of the SCHULTE GROUP